

Common Hazards



Overloaded plugs



Improper storage of flammable materials



Blocked fire exits



Faulty Wirings or Damaged Electrical Equipments

Reminder



Attend fire safety briefings



Participate in fire drills



Make sure you know the evacuation routes and procedures



Know who your assigned safety representatives are



Report fire hazards immediately

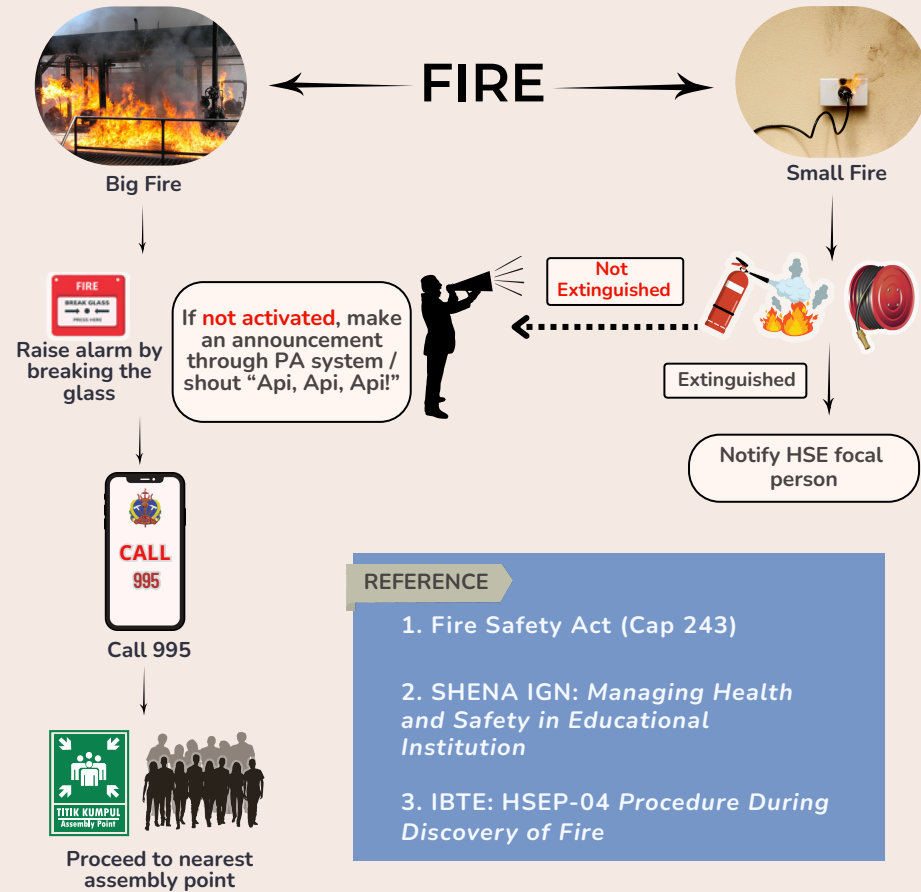
USE THE CORRECT FIRE EXTINGUISHER



HOW TO USE A FIRE EXTINGUISHER THE P.A.S.S METHOD

- STEP 1**
PULL
 Pull the safety pin to activate the extinguisher.
- STEP 2**
AIM
 Aim the nozzle at the base of the fire.
- STEP 3**
SQUEEZE
 Squeeze the handle or lever to release the extinguishing agent.
- STEP 4**
SWEEP
 Sweep the nozzle from side to side.

WHAT IF A FIRE IS DISCOVERED IN IBTE?



- #### REFERENCE
1. Fire Safety Act (Cap 243)
 2. SHENA IGN: *Managing Health and Safety in Educational Institution*
 3. IBTE: HSEP-04 *Procedure During Discovery of Fire*

